



LQBW-EXP

BRIARWOOD LIBRARY RENOVATION

COMMUNITY BOARD 8 PRESENTATION | 2023.06.26

VERONA
CARPENTER
ARCHITECTS









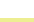
COMMUNITY DISTRICT 8

CURRENT PHASE: Submitted Schematic Design Final in June 2023

PROJECTED CONSTRUCTION START: 2025

COMMUNITY DISTRICT 8

AREA BY LAND USE TYPE:

-  TRANSPORTATION & UTILITY
-  VACANT
-  MIXED RES & COMMERCIAL
-  COMMERCIAL & OFFICE
-  MULTIFAMILY ELEVATOR
-  PUBLIC FACILITIES & INSTITUTIONS
-  MULTI-FAMILY WALK UP
-  OPEN & OUTDOOR GREEN SPACE
-  1 & 2 FAMILY

Source: *Land Use in Community District 8*
communityprofiles.planning.nyc.gov/queens/8


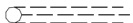





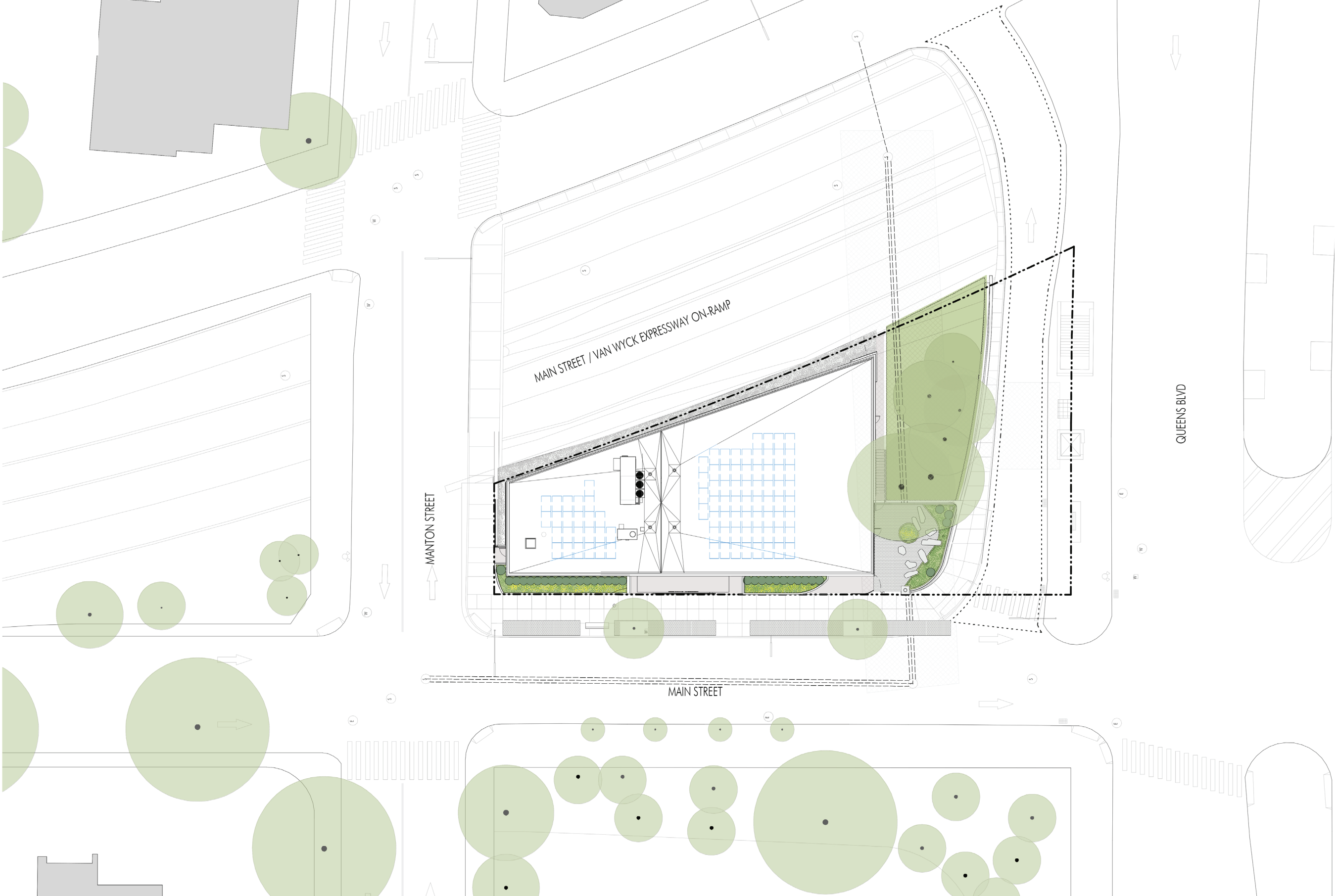
-  BRIARWOOD LIBRARY
-  1-2 STORIES
-  3-5 STORIES
-  OVER 5 STORIES



THE NEIGHBORHOOD

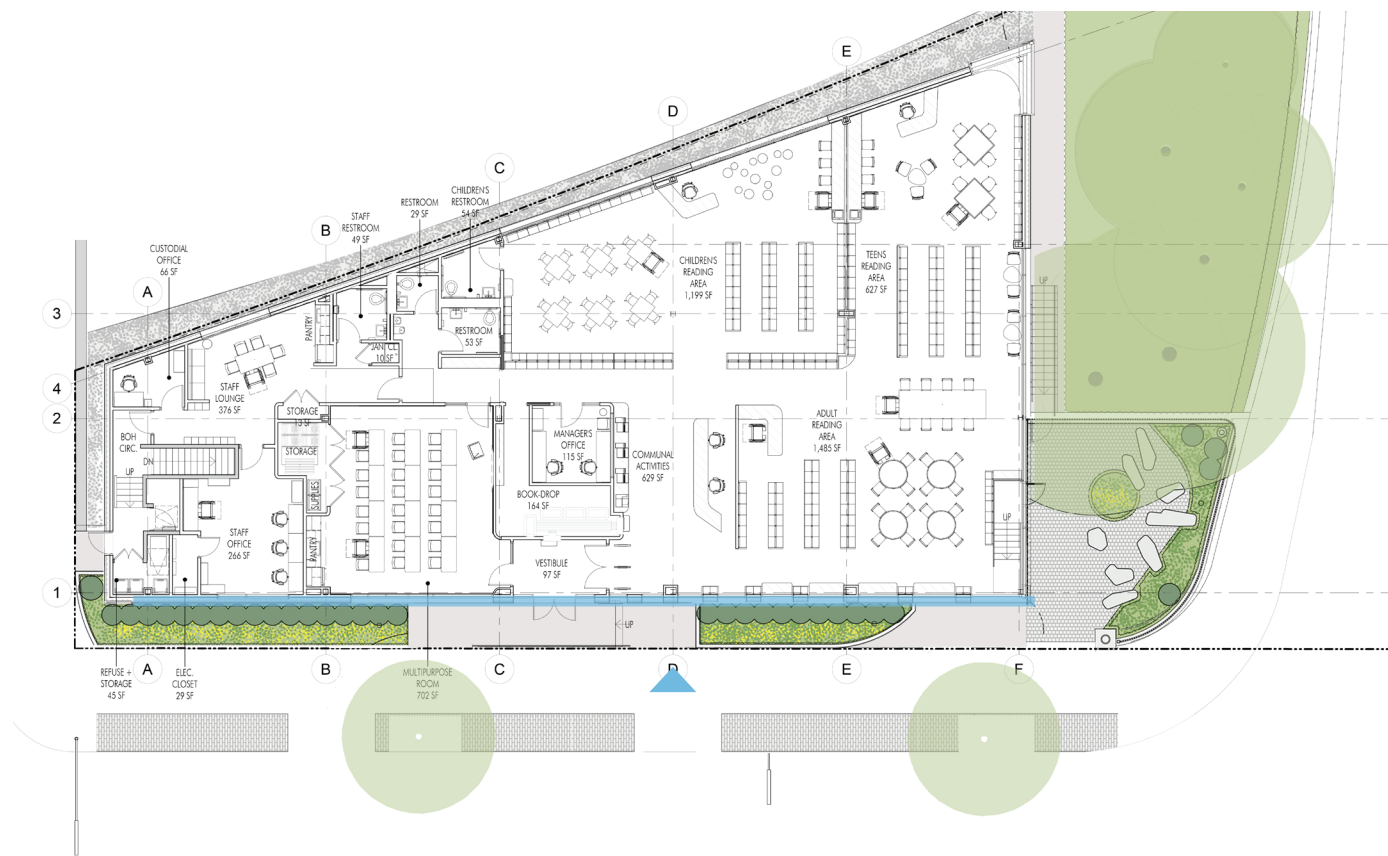
LEGEND

-  SOLAR PANEL (APPROXIMATE LOCATION)
-  24" SEWAGE LINE
-  DEP CORRIDOR
-  DOT TURNAROUND
-  PROPERTY LINE

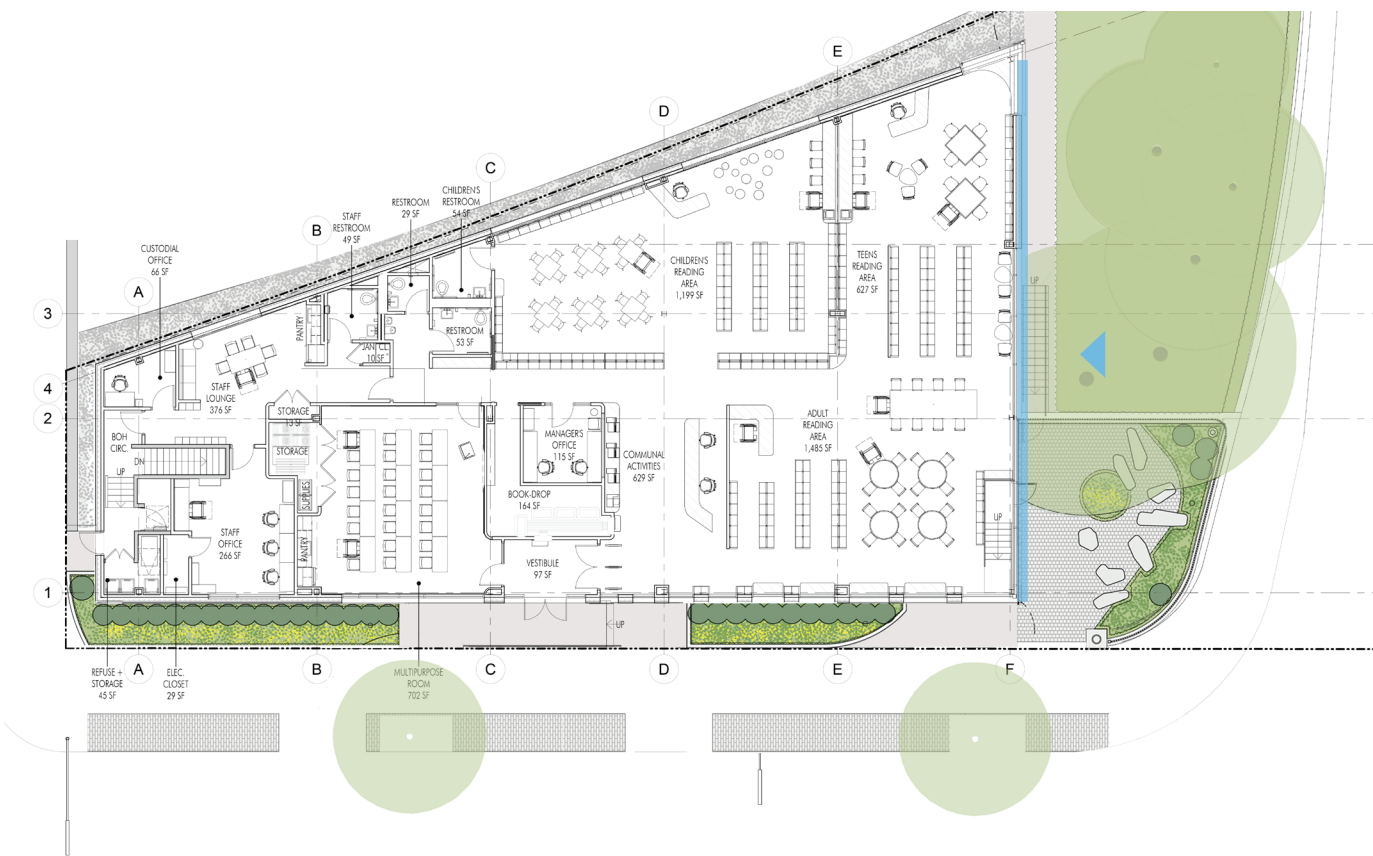
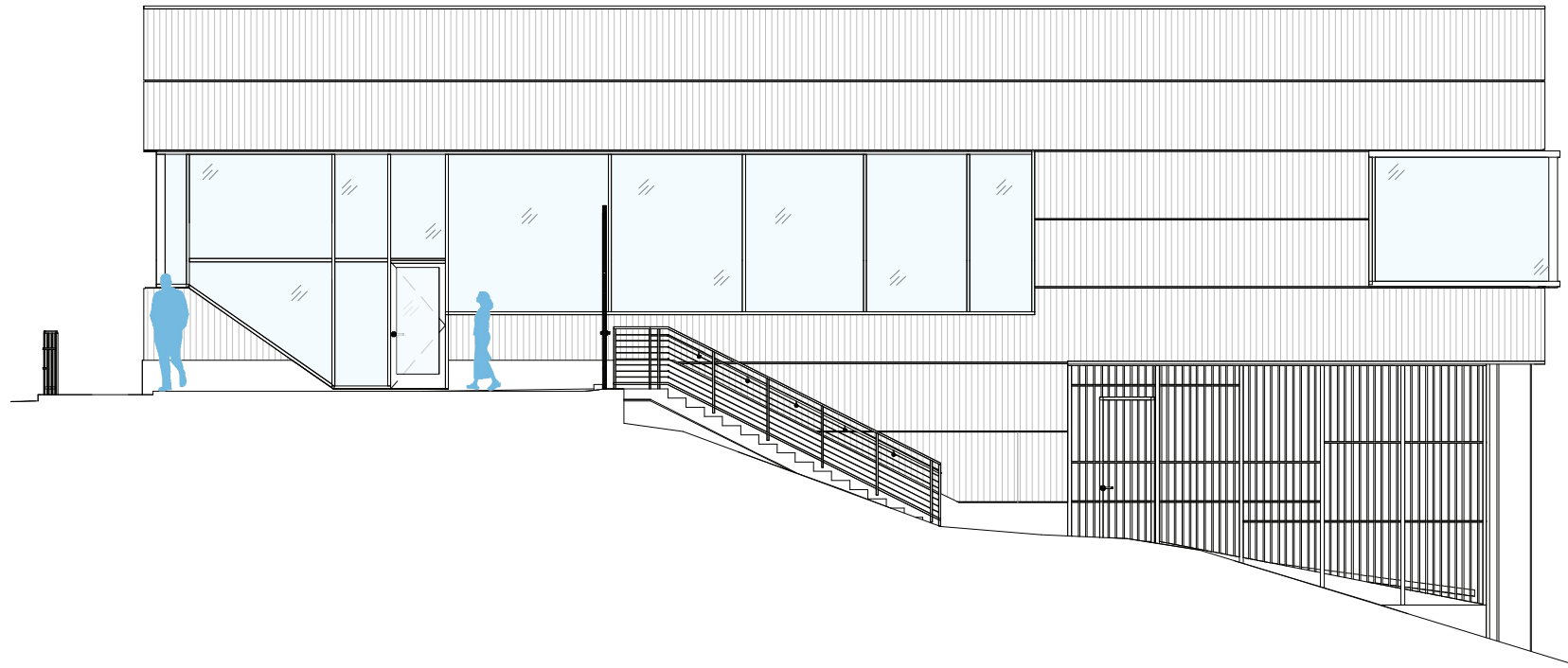




WEST FACADE

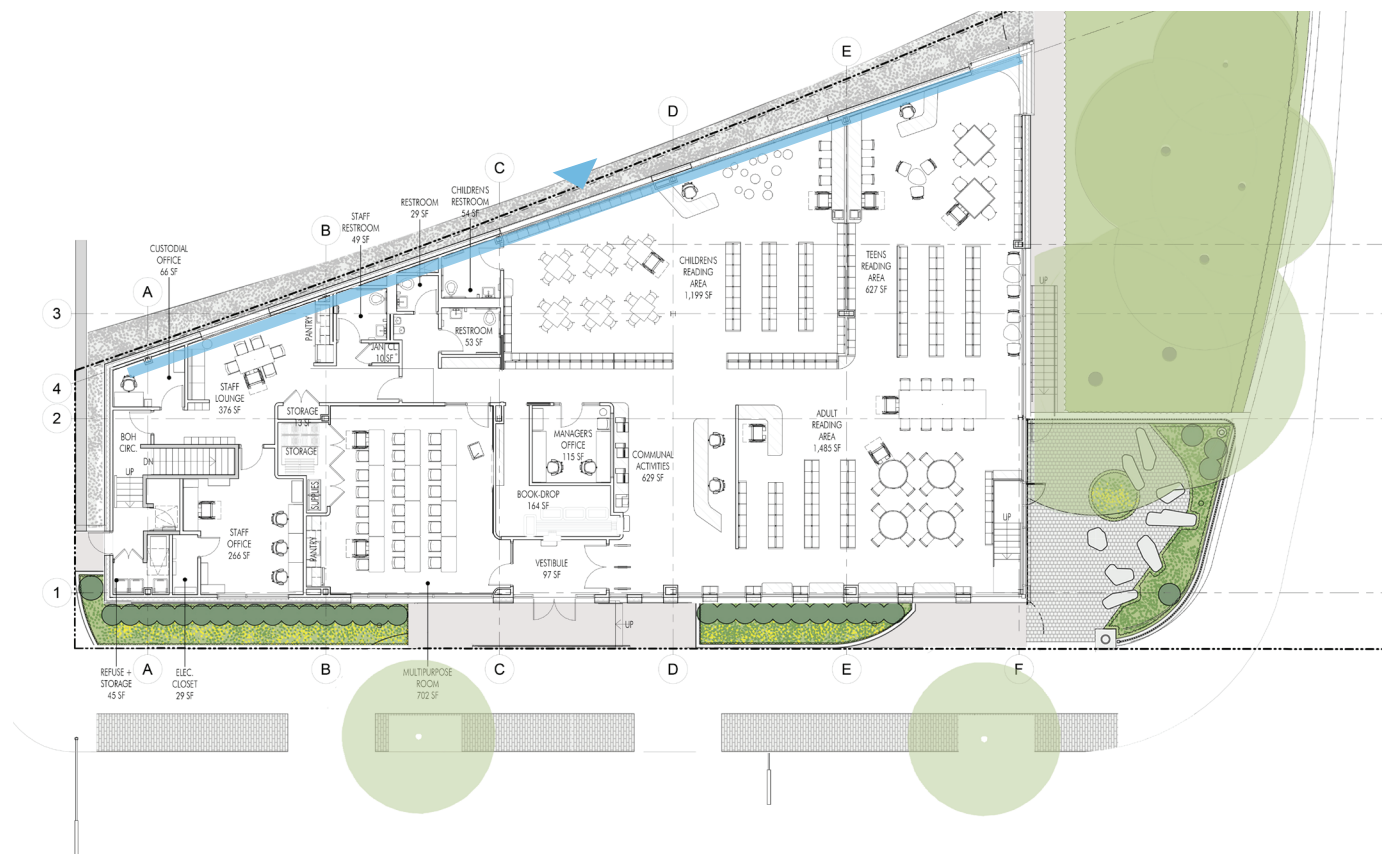
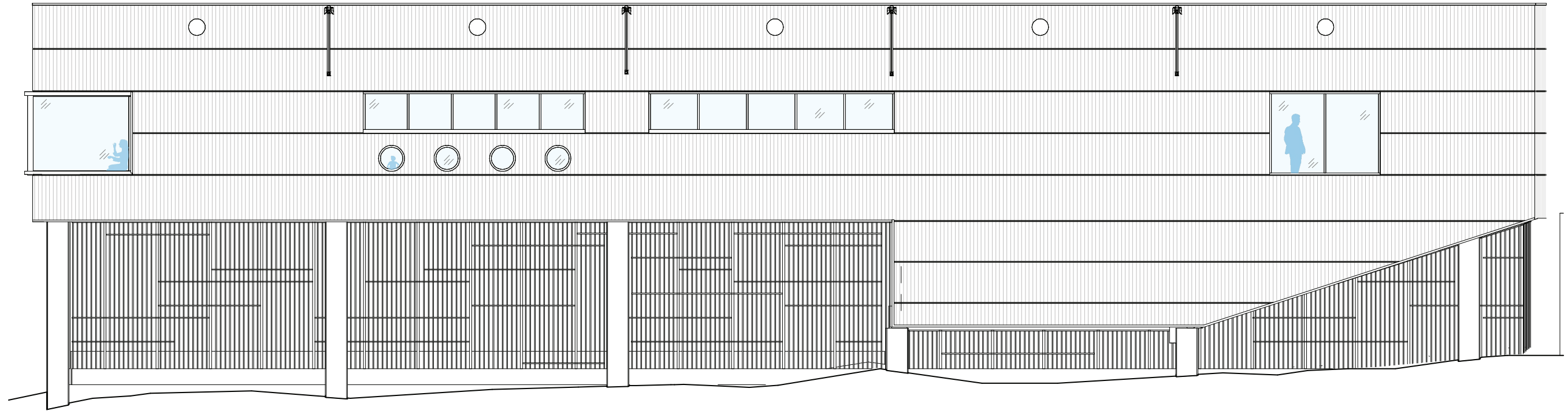


SOUTH FACADE





EAST FACADE

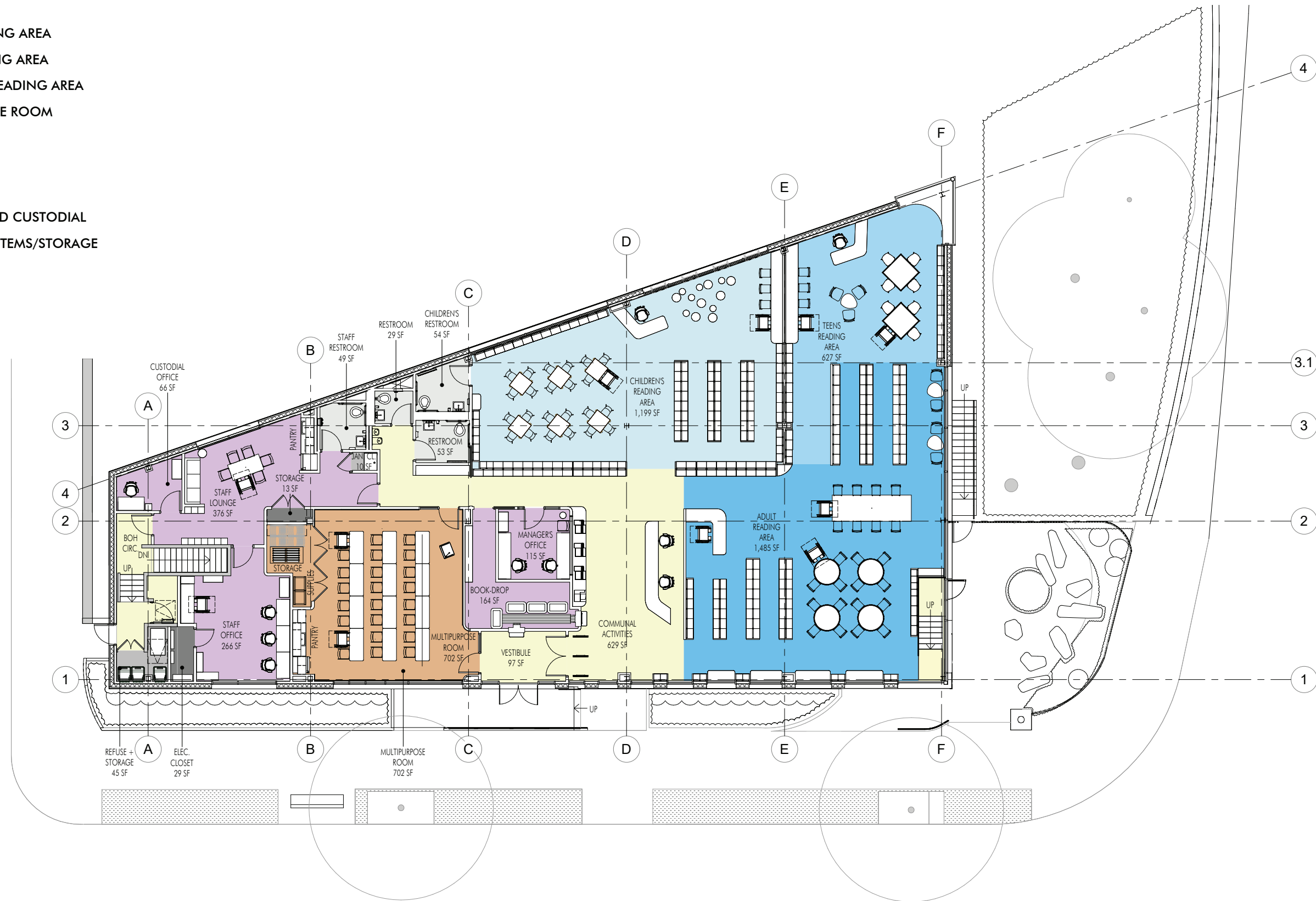






LEVEL ONE LAYOUT

- ADULT READING AREA
- TEENS READING AREA
- CHILDREN'S READING AREA
- MULTIPURPOSE ROOM
- STAFF AREAS
- CIRCULATION
- RESTROOM
- FACILITIES AND CUSTODIAL
- BUILDING SYSTEMS/STORAGE



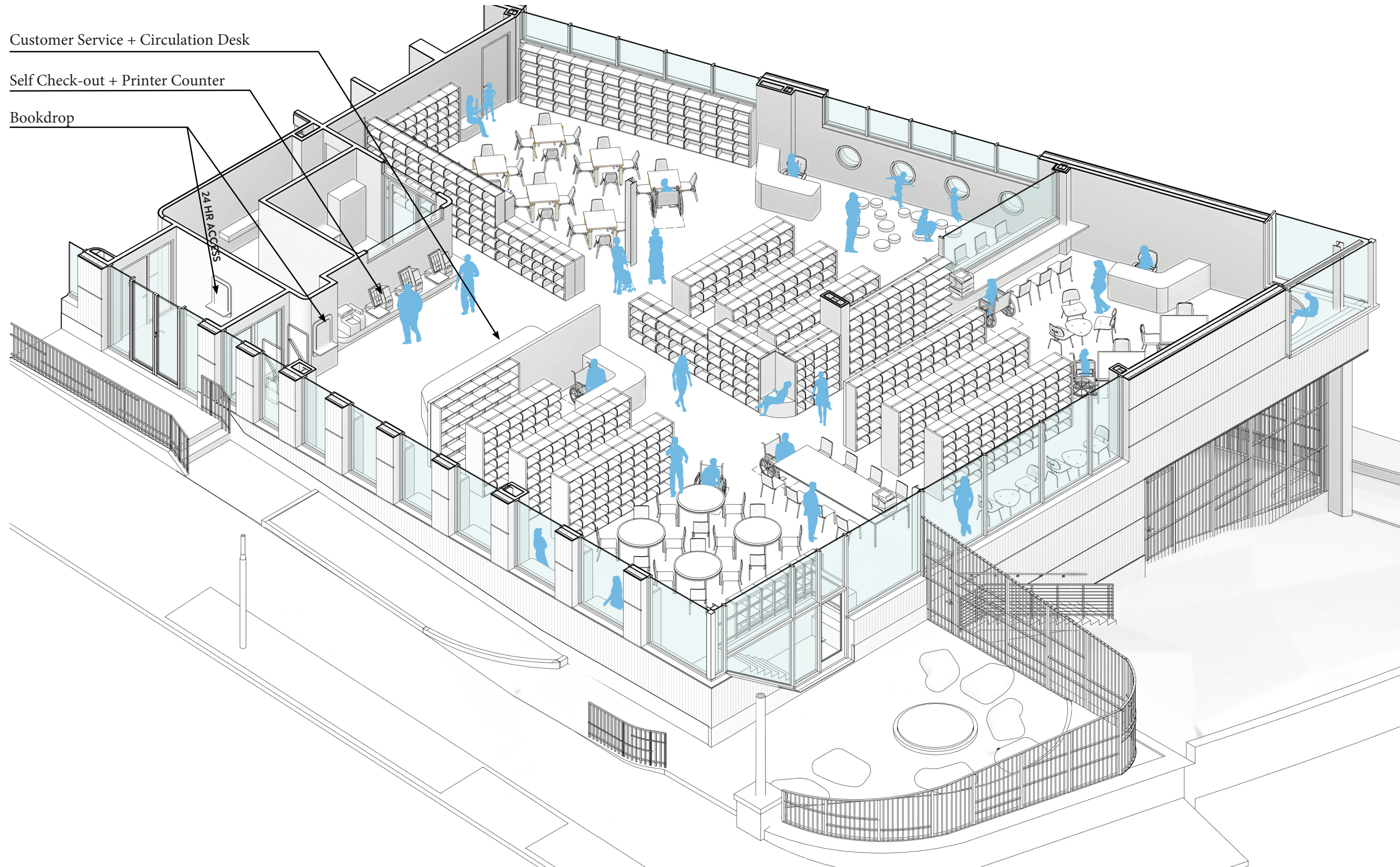
COMMUNAL ACTIVITIES

Customer Service + Circulation Desk

Self Check-out + Printer Counter

Bookdrop

24 HR ACCESS

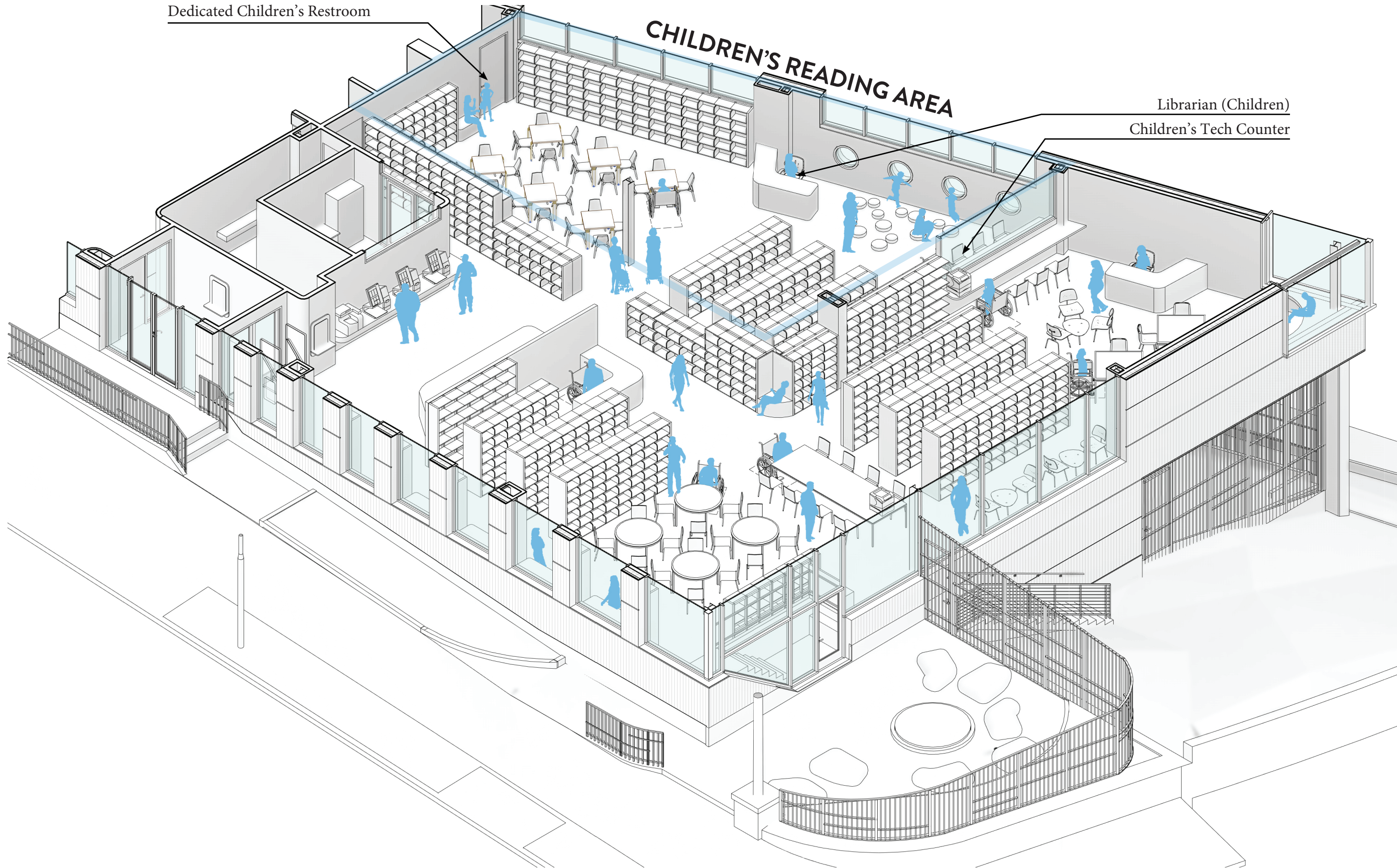


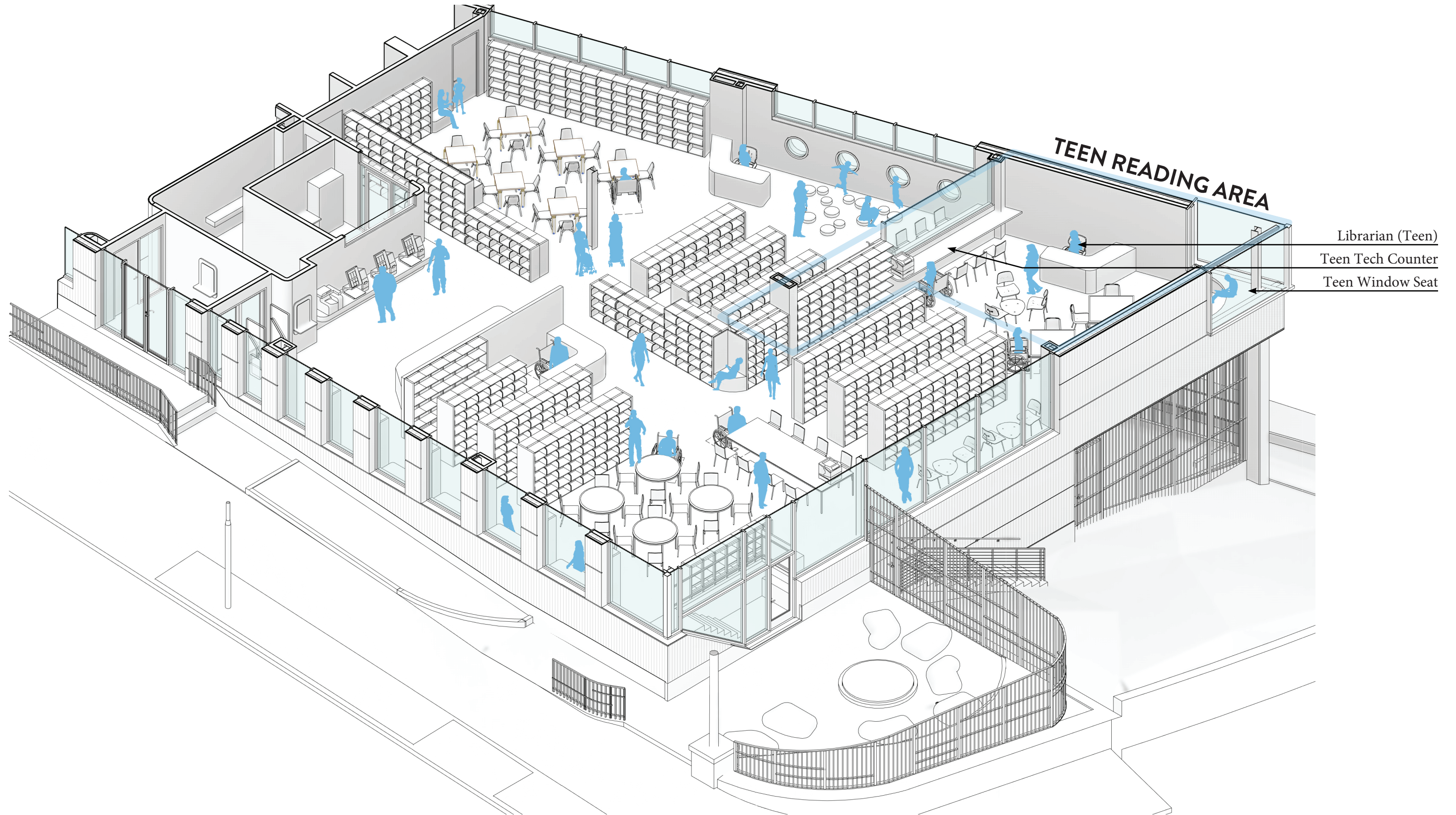
CHILDREN

Dedicated Children's Restroom

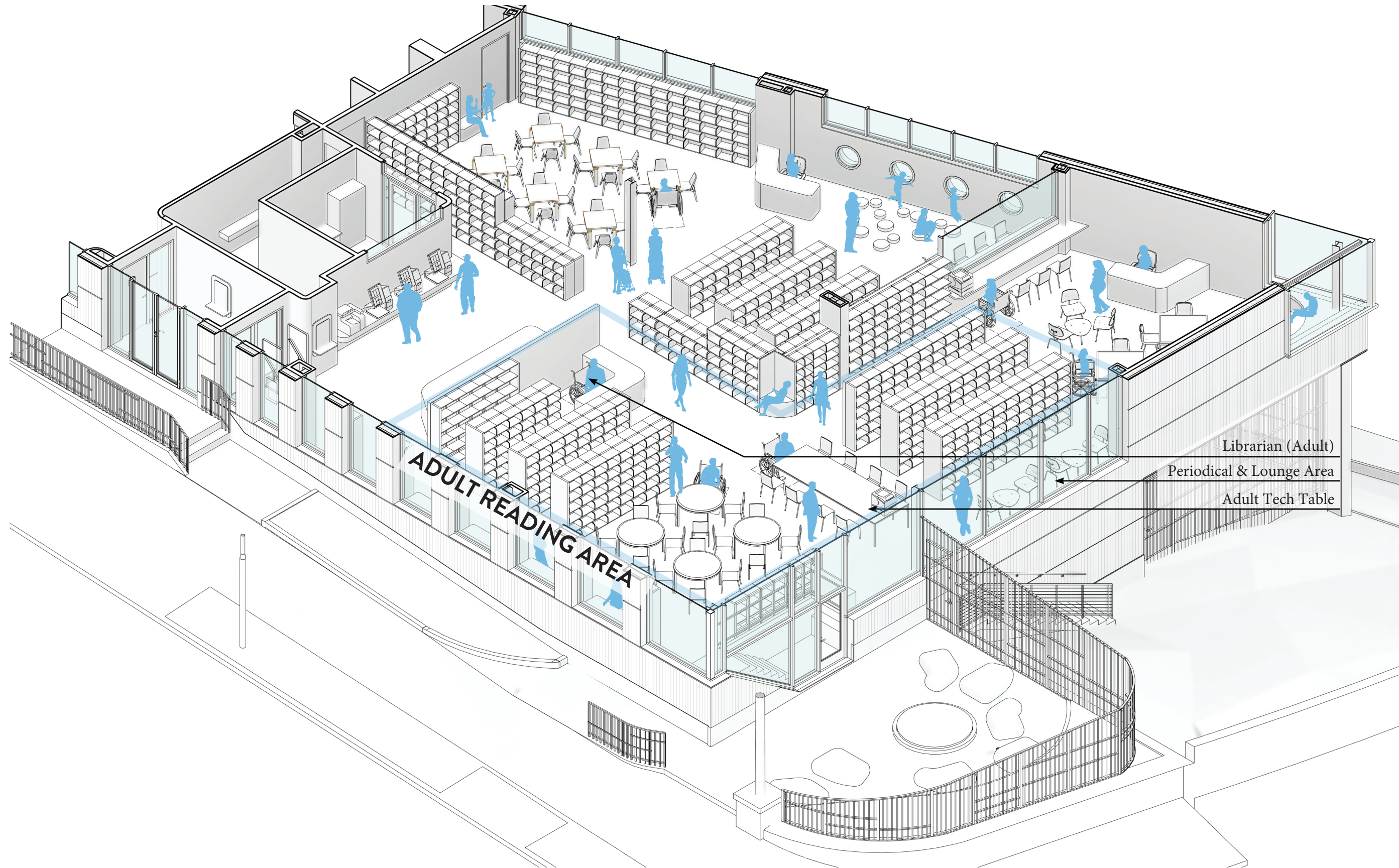
CHILDREN'S READING AREA

Librarian (Children)
Children's Tech Counter





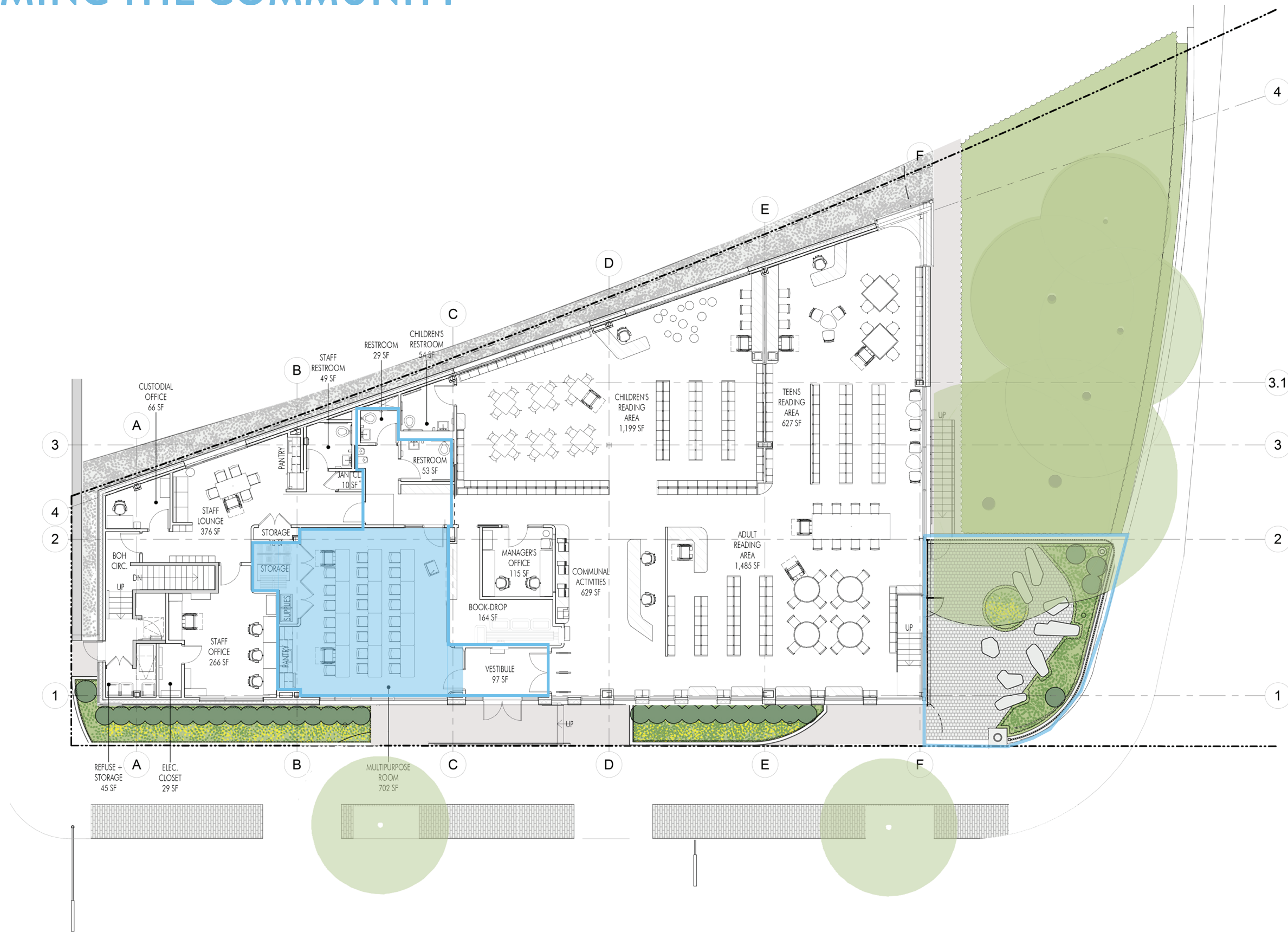
ADULTS



ADULT READING AREA

Librarian (Adult)
Periodical & Lounge Area
Adult Tech Table

WELCOMING THE COMMUNITY





ANNA KILLION | OUTREACH COORDINATOR
Office of Community Outreach & Notification (OCON), Public Buildings
NYC Department of Design and Construction
Mobile: 347.374.0930
Email: KillionAn@ddc.nyc.gov